

SHC Heartbeat

Whatever you do, work at it with all your heart

Issue 5
April 2025



From the Principal

Kia ora koutou katoa
Talofa lava
Fakaalofa lahi atu
Kia orana
Mālō e lelei

Namaste
Welkom
Herzlich Willkommen
Witamy
Nǐ hǎo Mālō ni

Enrolment for 2026

Enrolments are now open
to Year 9s in 2026

Apply to Enrol Online Now

[SHC Application to Enrol](#)

Nau mai, haere mai, e te whānau

Last week, I had the privilege of joining staff and student leaders from our sister RNDM schools to learn about leading as Euphrasie Barbier did. We reflected on how she faced challenging times in her life yet never lost her vision or sense of purpose. Her faith and determination continue to inspire us in our own leadership and service.

Dame Joy Cowley shared her own Easter story—one of loss and hope. Losing her sight was a profound challenge, especially for a writer. Yet, in that loss, she found a deeper understanding of faith and resilience. Easter calls us to reflect on loss, but also on the promise that death is not the end. It is a time of renewal, of trusting that even in our struggles, we are moving towards something greater.

We all face loss in different ways, yet we can live in the hope of new beginnings. As the whakataukī reminds us:

Ka mate he tētēkura, ka ara he tētēkura
As one frond dies, another rises to take its place.

May this Easter season be a time of reflection, renewal, and hope for our school community.

"It takes a village to raise a child" and we are blessed with our village.

Last weekend I had the opportunity to join members of the School Board and the Mission Colleges Lower Hutt Trust Board to reflect on our shared purpose. I am grateful for the support given by these two groups of people. We are all busy, and we are a richer community for the generosity of people giving up of their time to serve others. We had a number of students out this week competing in the Summer Sport Tournament and we are so appreciative of all the coaches, managers and parent supporters who made this possible.



At Sacred Heart we are committed to maintaining a respectful and supportive environment for all students, staff, and families. It is essential that we work together in a positive and constructive manner, especially when addressing concerns. As the whakataukī reminds us:

Ehara taku toa i te toa takitahi, engari he toa takitini
My strength is not that of an individual, but that of the collective.

We believe that by working together and supporting each other, we can achieve the best outcomes for all.

If you have any complaints or concerns, we encourage you to make contact with us as soon as possible. Addressing issues early, when they are small, helps prevent them from growing into larger problems. We understand that concerns can sometimes come with strong emotions, but we kindly ask that you try to approach these situations with positivity. Our staff are dedicated to doing their best for all students, and your support and understanding go a long way in fostering a collaborative and effective learning environment.

Thank you for your continued partnership in ensuring the success and well-being of our students.

Ngā mihi nui

Katrina Kerr-Bell, Principal

Winter Uniform – Term 2

Students change to Winter uniform on **Monday 28 April, the start of Term 2**. The uniform shop's last day open before the holidays is Thursday 10 April at 8.00-9.00am.

Online orders need to be made and paid for no later than Tuesday 8 April for collection on Thursday 10 April. [Link to website uniform page](#). Orders made during the holidays will not be available for collection until Tuesday 29 April.

Staff Only Days

At last week's Staff Only Days as a whole staff we explored a timeline of key events in both Pacific and New Zealand history, with a focus on the Polynesian Panther Party and the "Fakailoga Tino" programme. The Polynesian Panther Party, founded in 1971, was a socialist activist group that fought against the racial discrimination and systemic inequality faced by Pacific Islanders in New Zealand.

Their legacy continues to resonate today, particularly through modern initiatives like "Fakailoga Tino" (Our Living Room), which supports educators in understanding and addressing racism in educational settings. This programme draws from the activism of the Panthers, empowering teachers to better connect with and support Pacific students.

By understanding the experiences and challenges of our students and their families, we, as educators, can create more meaningful and engaging learning experiences. This deeper connection helps to foster stronger relationships, cater to individual needs, and build an inclusive and supportive learning environment that celebrates diversity and promotes equity.

On day two, we delved into an interactive workshop that focused on understanding the profound impact government policies have had on Māori and Aotearoa New Zealand's national identity.

How can I Help my Child's Learning?

- Encourage them to attend school everyday.
- Support them with their homework, spending time each night going over the work covered that day in class, or the work set by the teacher.
- Try to be positive, avoid saying "I hated PE too".



School Nurse

A school nurse is available free to all students at SHC three days each week during the school term at the following times:

Monday morning
Tuesday all day
Friday morning

Parents can also make a booking to discuss student concerns.

Bookings can be made via Teams message or by emailing nurse@sacredheartcollege.school.nz

This service provides blood tests, prescriptions, check-ups and medical certificates.

Peer Support

The end of Term 1 sees the completion of our Peer Support programme on Tuesday afternoons. In Term 2 the Year 9s will also finish school at 2.35pm on Tuesdays. Buses run at the normal time.

The Peer Support Leaders have done a wonderful job helping the Year 9s to settle into Sacred Heart and develop friendships amongst their classes, as well as supporting them on the Year 9 camp. They will continue to connect with their Year 9s throughout the year. We are so grateful for their service and for being such wonderful examples of what it means to be part of the sisterhood. Miss Greaney

What's On

Check the school calendar at www.sacredheartcollege.school.nz

Week 11A

Theme: Mana Tangata

8 Apr Whole School End of Term Assembly
Peer Support (2.35-3.20pm)
Poly Club Practice (2.45-4.00pm)
Sheilah Winn Shakespeare Festival (5.00-9.30pm)
Wgtn Girls'

8-11 Apr National Youth Jazz Competition Trip
9 Apr Māori Achieve (lunchtime) Atawhai
Homework Club (3.30-4.30pm) Library
Te Huatai Katorika Rehearsal (5.00-7.00pm) SBC
School Board Meeting (7.00-8.30pm) Library

10 Apr Easter Quiz (lunchtime) PAC
Big Sister (3.30-4.30pm)
Poly Club Practice (4.30-6.00pm)

11 Apr Last Day of Term 1
Kapa Haka Rehearsals (lunchtime) PAC

12-13 Apr Te Huatai Katorika Noho Marae (Ōrongomai Marae)

Term Break 12-27 April

15 Apr Poly Club Holiday Rehearsal (10.00am-3.00pm) SHC

16 Apr Poly Club Holiday Rehearsal (10.00am-3.00pm) SHC

18 Apr Good Friday

21 Apr Easter Monday

23 Apr Te Huatai Katorika Holiday Rehearsal (9.00am-3.00pm)
St Pat's

ShowQuest Rehearsal (10.00am-5.00pm) PAC

24 Apr Te Huatai Katorika Holiday Rehearsal (9.00am-3.00pm)
St Pat's

Poly Club Holiday Rehearsal (10.00am-3.00pm) SHC

Week 1A – Term 2

Theme: Mana Tipuna

28 Apr First Day of Term 2

SHC School Board Notice

Sacred Heart College School Board Casual vacancy for a parent representative

A casual vacancy has occurred on the school board for an elected parent representative.

The board has decided to fill the vacancy by selection.

The person selected will be on the school board for 3 or 4 meetings prior to the 2025 Triennial School Board Elections being held in September and could choose to stand in that September election.

If 10% or more of eligible voters on the school roll ask the board, within 28 days of this notice being published, to hold a by-election to fill the vacancy, then a by-election will be held.

Request for a by-election should be sent to:

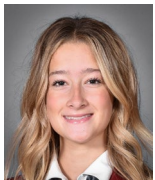
Presiding member (chair)
Sacred Heart College Board

Physical Address: 65 Laings Road, Hutt Central, Lower Hutt 5010

Email Address: botchair@sacredheartcollege.school.nz

by: Tuesday 29 April 2025

Phoebe Jefferson – Head of Service



Hi everyone. My name is Phoebe Jefferson, and I am very grateful to be your Head of Service for 2025. It is my privilege to serve as one of your leaders this year and help create a stronger sense of service at our school. I am very lucky to have such a strong leadership team beside me and be able to lead the school with so much knowledge and wisdom around me. I was born in Lower Hutt and have lived here all my life, with my parents, two older brothers, my cat, and my very loving dog. My family has shaped me into the person I am today and so has Sacred Heart. I encourage everyone to make the most of the opportunities that come their way. College goes by way too fast, so make the most of it. I can't wait to see what 2025 will bring. Let's make it the best year yet.

Harriet Rosemergy – Head of Sport



Hey everyone. My name is Harriet Rosemergy, and I am super excited to be your Head of Sport for 2025. I'm excited to work with our leadership team throughout this year to make it really fun and successful. I'm very lucky to have been given this opportunity for this year and to work with such amazing leaders. I was born in Lower Hutt and have lived here all my life with my parents, two younger brothers, my dog and my cat. My family and friends are my biggest supporters. Sacred Heart College has encouraged me to put myself out there and take advantage of new opportunities. I'm so grateful to thank the school for all the friends, memories and opportunities it's given me. I'm so excited to see what this year brings.

Social Sciences in the Library

Senior and Junior Social Sciences classes are making the most of the library in the new Mission House, even if it's a bit further to walk from our classrooms than it used to be. Year 9 students are exploring the space while researching for their Kete



Assignments and are learning to take notes from books and APA reference in the process. Senior History students have been learning how to use the EPIC database and are going back to basics with books as they assess the validity of sources for their research internals. Year 13s are focussing on 19th-century Wellington topics such as the 1846 Battle at Boulcott's Farm, while Year 12s have a Pacific focus with topics like Blackbirding, New Zealand's annexation of Niue, and the 1918 influenza pandemic's impact on Sāmoa. Thanks to Mrs Asprey, our dedicated librarian, for her invaluable support of our classes. *Mrs Anna Peszynski, HOD Social Sciences*

Sport

Weekly Competition

Volleyball: Our Senior A Volleyball team had a very close game against St Mary's College eventually winning 3-2 to be crowned CSW Premier Girls Champions in 2025. A huge thank you to all the support from coaches, managers and the Sacred Heart Community who cheered our team on throughout the final at our gym.



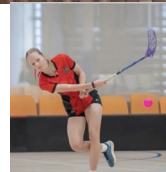
Sport Cont.

Summer Tournament Week

Basketball: We entered a team in the 3x3 Basketball Regional tournament at Walter Nash. The team had some very close games and came 4th. Thank you to Theresa To'ia for supporting our team.



Floorball: For the first time we entered a team in the Floorball Nationals. Our young team did very well coming 5th in the senior competition. Thank you to Sheree and Codi Ashton for supporting the team.



Futsal: It was our second time competing in the Futsal Nationals this year and our results were significantly improved from 2024 coming in 18th (30th in 2024). This placing secures our entry for the tournament in 2026. Thank you to Gavin Barber for supporting our team.



Volleyball: Our Senior A team competed in the Secondary School National Tournament in Palmerston North. The event is one of the biggest sporting competitions with 99 girl's teams. SHC



won 2 out of 3 pool games qualifying for Division One (our team was the only Wellington Region team, boys or girls, that qualified for Division One). The final team placing was 16th with plenty of good volleyball played. A special thank you to Nevo Siolo-Tuiletufuga, Tessa Siolo-Thompson, Petrina Foaese, Mereseini Macu, Jada Skipper-King, Kiana Uriarau and Gibeon Pole'o for supporting the students.

Softball: After a long absence from the Softball Secondary School Nationals, we entered a team in 2025. Our team did very well coming 4th in the Division 1 competition. Thank you to Ashleigh Roil, Rawhiti Smallman and Maui for supporting the team.



Athletics: Seven SHC students qualified for the Athletics Regional event held on Tuesday 20 March. Results were:

Leah-Ray Roil – Junior 100m 8th and 200m 7th

Kristen Scott – Junior 800m 6th

Kelsey Tye – Junior 1kg Discus 5th

Milana Burt – Intermediate 100m 14th

Paloma King – Senior 100m Hurdles 1st, Long Jump 1st

Gwen McGrath – Senior 1500m 4th, 3000m 4th

Isabel To'a – Senior 3kg Shot Put 1st, 1kg Discus 1st

Congratulations to **Isabel To'ia** and **Gwen McGrath** for being selected into the North Island Secondary School Wellington team to compete in early April 2025.

Outside School Achievements

Basketball: **Isabel To'ia** and **Jas Mita** have been selected for the Wellington Basketball U20 Representative Team.



The team will attend Nationals in Tauranga over the period 30 May-2 June.