

# SHC Heartbeat

Whatever you do, work at it with all your heart



Issue 18  
November 2024



## From the Principal

Kia ora koutou katoa  
Talofa lava  
Fakaalofa lahi atu  
Kia orana  
Mālō e lelei

Namaste  
Welkom  
Herzlich Willkommen  
Witamy  
Nǐ hǎo

Mālō ni

**School is Closed**  
**Friday 15 November**  
**Ministry of Education**  
**Staff Only Day**

November begins with the celebration of All Saints and All Souls Day in the Liturgical Year. A time for reflection and thanksgiving.

On November 1st, the Feast of All Saints honours all saints, both known and unknown, who have led lives of holiness. The following day, November 2nd, is the Feast of All Souls, a time dedicated to praying for those who have passed on, asking that they may "rest in peace." This is a meaningful opportunity to remember and pray for loved ones who have died. You might consider visiting your Parish church with family members, lighting a candle, and spending time in prayer. Or, if it's more convenient, you could set aside time at home for a special moment of prayer to honour family members who have passed.

In our community, we also remember Ann Watt and extend our thoughts to Maria Potter and her family, who laid her mother to rest last week. Let us hold in our hearts all in our community who have lost loved ones.

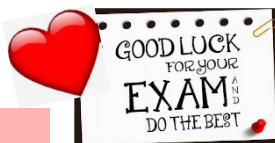
Over the past three weeks, we have enjoyed wonderful celebrations honouring our students' achievements in academics, sports, and cultural pursuits and their commitment to our school values. Thank you to everyone who joined us for these events. As our seniors begin their external exams, we pray that they may be guided by the gifts of the Holy Spirit—wisdom, knowledge, and courage.

Ngā manaakitaka  
Katrina Kerr-Bell, Principal

## NCEA



- Students must bring their examination admission slips with them. Once issued to students, these must be kept in a safe place. Spare copy available from the office.
  - If unwell, please phone the school office as soon as possible. Derived grade forms are available from the school office or can be downloaded from NZQA.
- The derived grade forms need to be with Mrs Ngaira Sewell by Friday 29 November.



## Year 10 Exams

All Year 10s are at school every day during exams.  
Exams are being held on Monday, Wednesday and Thursday next week.  
Students must be on time and go straight to exam rooms at 8.45am. The exams will then start at 9.00am.

## What's On

Check the school calendar at [www.sacredheartcollege.school.nz](http://www.sacredheartcollege.school.nz)

### Week 4B

**Theme: Mana Whenua**  
8 Nov Yr 10 Exams Start

### Week 5B

**Theme: Mana Whenua**  
**Papua New Guinea Pidgin Language Week**  
**NCEA Exams**

11 Nov Yr 10 Exams (8.45am-3.20pm)  
13 Nov Yr 10 Exams (8.45am-3.20pm)  
Homework Club (3.30-4.30pm) Library  
School Board Meeting (7.00-8.30pm) Library  
14 Nov Yr 10 Exams (8.45am-3.20pm)  
Football Have a Go (lunchtime) Gym  
15 Nov **MOE Staff Only Day**  
**No NCEA Exams as it is Canterbury Anniversary Day**

### Looking ahead:

18-20 Nov Yr 10 Camp  
21 Nov Football Have a Go (lunchtime) Gym  
5-6 Dec Yr 9 Marae & DOE Days  
9 Dec Junior Wellbeing Day  
11 Dec Junior Prize Giving and Mass (last day)

## Mana Pasifika Pacific Success Evening

On Thursday 24 October, Sacred Heart College celebrated Mana Pasifika - Pacific Success evening for the third consecutive year. It was a vibrant evening with past pupils giving back to the College - Ladean Malifa as MC, guest speaker Tapu Vea, 1998 Poly Club leader Keke Time-Scrimshaw and 2010 Head student Moushmi Fa'amate as presenters. The awards were established for Year 9-13 Pacific students across seven categories that highlighted core Pacific values in the different Pacific languages. The Year 13 Pacific leavers were also farewelled and acknowledged for their service to the College.

Congratulations to all our Mana Pasifika prize winners for 2024, especially the seven category winners and Mana Pasifika Supreme Award winner, who were recognised for their successes and disciplines before a packed Performing Arts Centre of families who were very proud to be there.

Fakaau lahi to Father Willie Uvea, the cultural working group staff, Pacific Parents and Families Collective, and the Village for a beautiful celebration.

A full list of nominees and awards will be added to our website soon.

### Isabel To'ia

Mateaki Li'oa Diligence  
Premier Award



Koe pale ki he fanauako, ngaue malohi, ma'u ako, maaui ē teunga ako. Pacific students who have applied themselves consistently to their studies, including punctuality, attendance, uniform, and effort.

*Trophy donated by Failoa Famili Trust. Cash prize \$300 from ACE Aotearoa.*

### Verona Parker

Tautua Fa'amaoni Service  
Premier Award



O i latou nei ua fa'amanuiaina i le tautua fa'amaoni e ala i 'au'aunaga 'ese'ese i totonu o le a'oga. Pacific students who have served with humility and integrity to the various areas of the school.

*Trophy donated by Hutt City Council. Cash prize \$300 from ACE Aotearoa.*

### Mia-Lo'ine So'otaga

Arataki'anga Leadership  
Premier Award



E 'akairo teia tei akaāri i te tūranga teitei o te tamaiti no runga i te arataki Pacific students who have demonstrated outstanding leadership.

*Trophy donated by Jess Andrew (past student). Cash prize \$300 from ACE Aotearoa.*

### Bettylicia Sa'u

Tau Fakaveaga He  
Fakaakoaga Students'  
Choice Premier Award



Tau fanau ne fakatumu ke fakakite e tau mahani mo e tau fakaveaga he aoga Students who have consistently demonstrated our school values - Mana Atua, Mana Tipuna, Mana Tangata, Mana Whenua, Mana Mātauranga.

*Trophy donated by Pacific All Stars Initiative and Vibe. Cash prize \$300 from ACE Aotearoa.*

### Nadene Malaki

Cocovi Ni Lewa Matau  
Pasifika Navigator Premier  
Award



E soli vua na gonevuli lewa matau nona bula ena gauna e sotava kina na dredre kei na vei bolebole eso. Pacific students who have navigated their way through significant challenges.

*Trophy donated by Ministry of Social Development. Cash prize \$300 from ACE Aotearoa.*

### Violet Fa'aso

Te Kanava Premier Award



This award recognises Pacific cultural leadership and excellence through Poly club. Te Kanava therefore symbolises a student anchored in mana, strength and service to others from the heart.

*Trophy donated by Tylah Lui-Pelasio (the inaugural Mana Pasifika Supreme Award recipient). Cash prize \$300 from ACE Aotearoa.*

### Jada Perez-Cant

Kaukumete Excellence  
Premier Award



Fanau akoga nae tumau te manaia a na hatalaga i vaega uma o te akoga. Pacific students who have consistently achieved excellent results in their chosen fields (eg: Academic, Sports, Performing Arts etc).

*Trophy donated by SHC Tokelau families. Cash prize \$300 from ACE Aotearoa.*

### Verona Parker

Mana Pasifika Supreme  
Award



This student isn't defined by the smallness of their island but by their greatness of their identity. They are proud of who they are, they display great strength, when faced with challenges and they continue to flourish in their leadership. This student consistently shows resilience, nobility and social solidarity.

*Trophies donated by SHC School Board, Hon Ginny Andersen MP. Cash prize \$1,000 from ACE Aotearoa.*

## Year 10 Trip to Osaka, Japan

Last month, 10 students from Sacred Heart College accompanied by Teacher in Charge of Japanese, Sarah Knowles, and 10 students from Wellington College had the wonderful opportunity to travel to Sakai City in Osaka, Japan, and visit Wellington's sister city, Sakai. This cultural exchange allowed students to experience Japanese culture firsthand through interactions with local students, workshops in traditional arts such as tea ceremony, and a magical visit to Universal Studios. Our time in Sakai was especially meaningful, strengthening the sister-city bond and highlighting shared values between our communities.

This journey not only broadened our students' cultural perspectives but also fostered friendships. We are incredibly proud of our students for representing our school and community with respect and enthusiasm. We look forward to more global exchanges like this in the future.

Upon their return to NZ, students were required to write an essay about their experience in Japan and it was recently judged by a board member of the Wellington Nakano Educational Society.

First prize was awarded to **Jakaya Hemera** 10NR (\$200 cash prize and will probably be presented by the Mayor of Wellington at a ceremony). Third prize was awarded to **Elyse Mafi-Macdonald** 10CM (\$100 cash prize). Congratulations.

*Mrs Sarah Knowles*



## Leaders 2025

On Wednesday 30 October, Sacred Heart's student leaders for 2025 were announced. Congratulations to you all.

### Peer Support Leaders

Teylah Alainu'uese	Kayla Little
Cyanne Austin-Rowe	Amelia Manu
Tanishka Bandaru	Jaja Maulolo
Molly Bank	Claudia Nunns
Mia Barnes	Cassidy Papier
Sabreen Berhane	Addison Richards
Tiana Betham	Daisy Robinson
Odetta Brown	Eden Roewen
Lyanie Jan Heart Calo-oy	Danika Ross
Davania Chadwick	Elora Sabac
Maya Christiansen	Sandra Salil
Lucy Cowley	Christine Sa'u
Nora Crichton	Matilda Smith
Acacia Hemera	Rose-Star Sok
Megan Henley	Lindsey Song
Pippa Hookham	Angelina Stanley
Briseis Hopoi	Mia Tutagalevao
Emma Joe	Sueanna William Ah Ken
Katie Jordan	Ashlee Yee
Bella Kilkelly	

## Leaders 2025 cont

### School Board Representative

Tahina Andriatovoaritsoa

### Head Librarian

Charlotte Prebble

### Poly Leaders (announced at Mana Pasifika)

Ashleigh Sharma	Louise Cocker
Delta Tuleaga Chadwick	Ruru Lupi

### Pacific Tuakana

Jaylaleiana Leleisiuao	Shekinah Sa'u
Keira Churchward	Vaeagi Vaitupu
Leilani Stempa-Gray	

### Kapa Haka Leaders (announced at Pō Whakanui)

Mollie Mato	Aiymani Taueki
-------------	----------------

### House Captains and Leaders

<b>Aubert</b> House Captain House Leaders	<b>Josèe Procter</b> <b>Delta Tuleaga Chadwick</b> <b>Sophie Cummins</b>
<b>Avila</b> House Captain House Leaders	<b>Ruby Keomany</b> <b>Alyssa Aoina</b> <b>Jas Mita</b>
<b>Barbier</b> House Captain House Leaders	<b>Megan van der Westhuizen</b> <b>Milla Sowerby</b> <b>Vaeagi Vaitupu</b>
<b>Lisieux</b> House Captain House Leaders	<b>Jaylaleiana Leleisiuao</b> <b>Louise Cocker</b> <b>Natalie Fifield</b>
<b>Lourdes</b> House Captain House Leaders	<b>Shekinah Sa'u</b> <b>Maggie Fairfield</b> <b>Paloma King</b>
<b>Siena</b> House Captain House Leaders	<b>Ponniha Ramachandran</b> <b>Sienna Judd</b> <b>Menara Surendra</b>

### Heads:

Head Student	<b>Isabel To'ia</b>
Deputy Head Student	<b>Alice Hoerara-Hunt</b>
Head of Māori	<b>Aiymani Taueki</b>
Head of Pacific	<b>Bettylicia Sa'u</b>
Head of Academic	<b>Sophie Mayo</b>
Head of Culture	<b>Mia Sarich</b>
Head of Performing Arts	<b>Vienna Serpa</b>
Head of Service	<b>Phoebe Jefferson</b>
Head of Special Character	<b>Jessica Greaney</b>
Head of Sport	<b>Harriet Rosemergy</b>
Head of Wellbeing	<b>Arnika Lahood</b>



## Dux and Proxime Accessit to the Dux



On Thursday 31 October at our senior prize giving we celebrated our students' academic awards.

**Amelia Prebble** was announced as Sacred Heart Dux for 2024, and **Viktoriya Lyubich** as Proxime Accessit to the Dux.

This recognition reflects Amelia and Viktoriya's excellent academic achievements this year.

Both students have excelled in all of their subjects and have modelled Mana Mātauranga at all times. We are very proud of them.

A special prize giving newsletter celebrating our academic awards will be distributed soon.



## College Sport Wellington Sports Person of the Year Awards

On 3 November we attended the CSW Awards to recognise the achievements of our students and sporting community.

We had 11 students listed as finalists in this year's awards. We are delighted to announce that we had three winners across a number of codes, which is a huge achievement for our school, along with Tessa Siolo Thompson a long time contributor to SHC sport.

Our finalists were:

**Leah Ah-Ken** – Basketball

**Molly O'Toole** – Water Polo

**Mackenzie Boyd** – Volleyball

**Gibeon Pole'o** – Volleyball

**Logan Crawford** – Ki-O-Rahi

**Fanua Rimoni** – Rugby and Rugby League

**Alice Davies** – Powerlifting

**Uryah Time** – Golf

**Acacia Hemera** – Touch Rugby

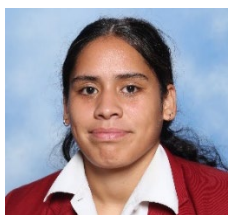
**Kiana Uriarau** –

**Maya McLay** – Water Polo

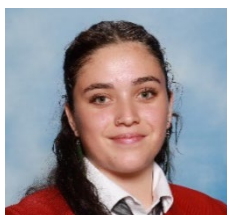
Student Official of the Year

Congratulations to everyone. This acknowledges the time and effort you have put into sport over many years.

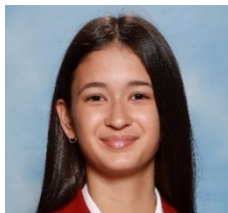
### Rugby Player of the Year Faunua Rimoni



### Volleyball Player of the Year Mackenzie Boyd



### Water Polo Player of the Year Maya McLay

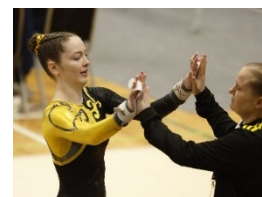


### Contribution to College Sport Tessa Siolo Thompson

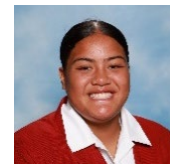


## Student Sporting Achievements

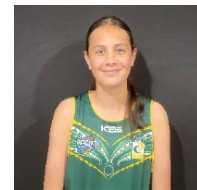
**Gymnastics: Maia Mason** (9BD) was recently selected to represent Wellington at the National Gymnastic Champs that was held in Palmerston North. This is a great achievement as only 10 athletes are selected based on their competitive scores (April to September) across the region.



**Rugby League: Victoria Tanoa'i** (10TC) will be leaving Sacred Heart College for an exciting journey on a Rugby League scholarship to Kirwan State High School in Townsville Queensland. We wish Victoria well in her move to Australia.



**Touch Rugby: Jada Tetevano** (9BD) represented the Cook Islands U16 girls at the Pacific Cup recently. Jada was the youngest player in the team and made a great contribution with some try-saving touches and good plays.



Well done for the great sporting achievements. We are very proud of you all.  
*Mrs Simone Naylor, Sport Director*

OPEN TO ALL STUDENTS

SUPPORT TE HUATAI KATORIKA

# MOVIE NIGHT

## fundraiser

Purchase tickets by scanning the QR code!

Raffle and sweet treats for sale! Bring cash!

Doors open 5:15pm  
Movie starts 5:45pm

# DEC

# 2

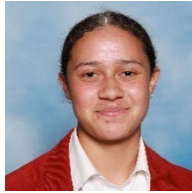
PETONE LIGHTHOUSE CINEMA

TICKETS: \$25

1 DRINK, CHIPS AND LOLLIES INCLUDED IN TICKET PRICE

# School Leaders 2025

Head Student



Isabel To'ia

Deputy Head Student



Alice Hoerara-Hunt

Head of Māori



Aiymani Taueki

Head of Pacific



Bettylicia Sa'u

Head of Academic



Sophie Mayo

Head of Culture



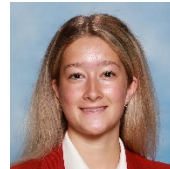
Mia Sarich

Head of Performing Arts



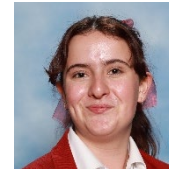
Vienna Serpa

Head of Service



Phoebe Jefferson

Head of Special Character



Jessica Greaney

Head of Sport



Harriet Rosemergy

Head of Wellbeing



Arnika Lahood

**Aubert**

House Captain



Josèe Procter

Leader

Leader



Delta Tuleaga  
Chadwick



Sophie  
Cummins

**Avila**

House Captain



Ruby Keomany

Leader

Leader



Alyssa  
Aoina



Jas  
Mita

**Barbier**

House Captain



Megan van der Westhuizen

Leader

Leader



Milla  
Sowerby



Vaeagi  
Vaitupu

**Board Rep**

Tahina  
Andriatovoaritsoa



**Head Librarian**  
Charlotte  
Prebble



**Lisieux**

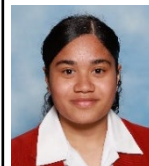
House Captain



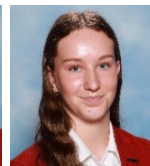
Jaylaleiana Leleisiuao

Leader

Leader



Louise  
Cocker



Natalie  
Fifield

**Lourdes**

House Captain



Shekinah Sa'u

Leader

Leader



Maggie  
Fairfield



Paloma  
King

**Siena**

House Captain



Ponnihia Ramachandran

Leader

Leader



Sienna  
Judd



Menara  
Surendra